



www.diagnoly.com



Ivan VOZNYUK
CEO, Co-Founder
ivan@diagnoly.com

Edwin QUARELLO
CMO, Co-Founder
edwin@diagnoly.com

CONTEXT

Cardiac fetal pathologies

over **4 000** births per day

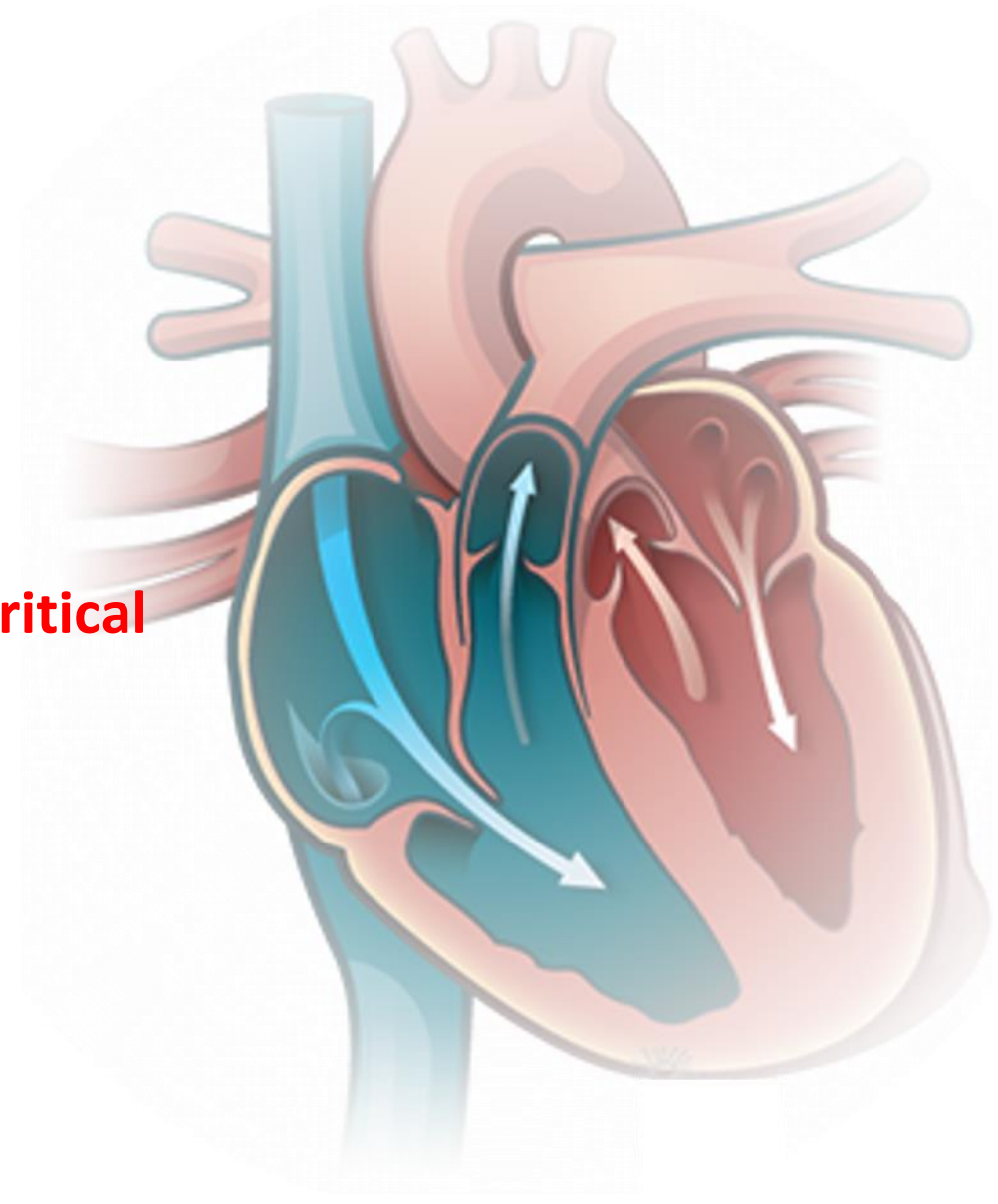
Ability to detect fetal complications prenatally is critical

Birth in a specialized center for

- Urgent surgery

- Prompt medical care

- Specific medication



References

J.-M. Jouannic, EMC (Elsevier Masson SAS), Obstétrique, 5-031-A 38 (2010)

Thakur, Varsha, et al., Cardiology in the Young 28.4 (2018): 548-553.

PROBLEM

Sonogram is complex

only **47%** are detected prenatally

Consequences are huge

50% of all infant deaths, handicap, lifelong disabilities

Unnecessary medical interventions

Heavy professional liability claims

References

Bensemlali, Myriam, et al., JACC 68.9 (2016): 921-930.

Garcia, Maynor, et al. Ultrasound in Obstetrics & Gynecology 47.4 (2016): 450-459.

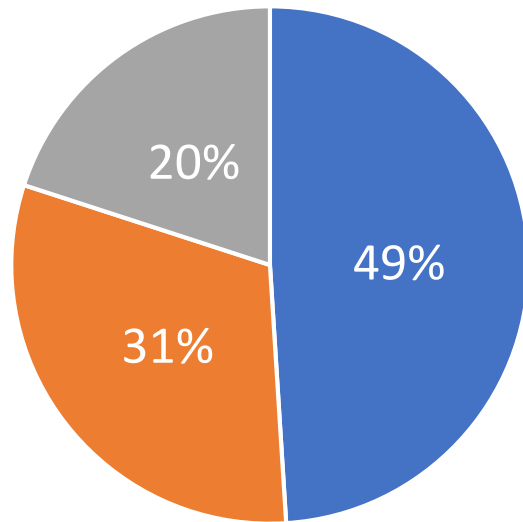
Millien, Christelle, et al, (2018).



WHY THE PATHOLOGIES ARE MISSED?

Operator dependency

Pathology is
not visible



Lack of
**adaptational
skills**

Pathology is
not recognized

References

- Pinto, Nelangi M., et al, Fetal diagnosis and therapy 47, no. 3 (2020): 188-197.
van Nisselrooij, A. E. L., et al, Ultrasound in Obstetrics & Gynecology (2019).
Sklansky, Mark, et al, Journal of Ultrasound in Medicine 35, no. 4 (2016): 679-681.



VALUE PROPOSITION

Medical-legal and economical

We can increase detection rate

from 47% to 96%



Decrease mortality and
improve outcomes



Save money to doctors and
medical social security



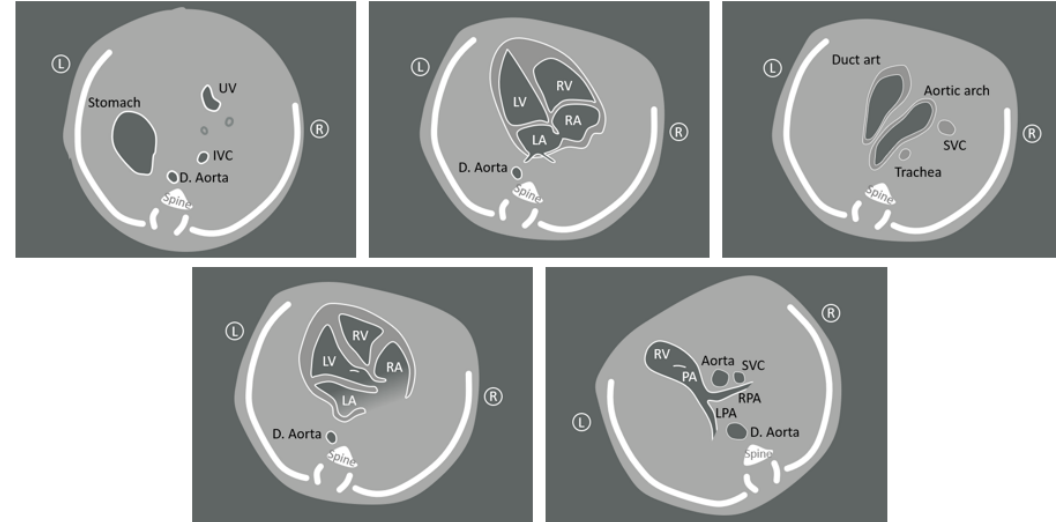
Save time to doctors

PRODUCT

AI-powered plug-in device



View categories requested for cardiac examination



DIAGNOLY

Purpose: analyze fetal examination in *real time* for helping doctor to handle **3 challenging tasks**:

- View planes check-up
- Medical validation of fetal examination
- Fetal screening

PROTOTYPE MEDICAL VALIDATION

Two medical studies

Fetal cardiac development classification

	Physio	Patho
Physio	98.0%	2.0%
Patho	17.0%	83.0%

Hospital of Saint Etienne
Dr Tiphaine BARJAT [1]

Fetal examination medical validation

Capital gain

For a regular practitioner

34.4%

For an expert

5.2%

3 French medical centers
2016 - 2020 years
Dr Edwin QUARELLO [2]

References

[1] Déborah SECCI, PhD thesis of a DES intern in obstetrical gynecology 9th semester, CHU of Saint Etienne (2021)

[2] Edwin QUARELLO et al, The left outflow tract in foetal echocardiography screening: an audit of practices and quality criteria, to be accepted to BJOG (2021)

BARRIERS TO ENTRY

Intellectual property

Fetal science

Trade secret
Fetal anatomical
quality
landmarks

Exclusive
OB/GYN
databases

Applied math

Patent filed
09.2020
New patent for
08.2021

Trade secret
Quality
improvement
Augmentation
techniques

TEAM

Polyvalent & multicultural



**Ivan
VOZNYUK**

**Founder &
CEO / CTO**

Strategy and R&D portfolio
PhD Computer science

Expertise in **grant financing**:
H2020 (FET, SME II), Eurostars,
ANR, Bpifrance
(> 3.6M€)



**Edwin
QUARELLO**

**Founder &
Chief Medical Officer**

Medical strategy
OB/GYN MD

Medical and OEMs'
network



**Arunava
MAULIK**

Data Scientist

MSc in Machine learning



**Chief Data
Scientist**

**In process of
recruitment**

Advisory board

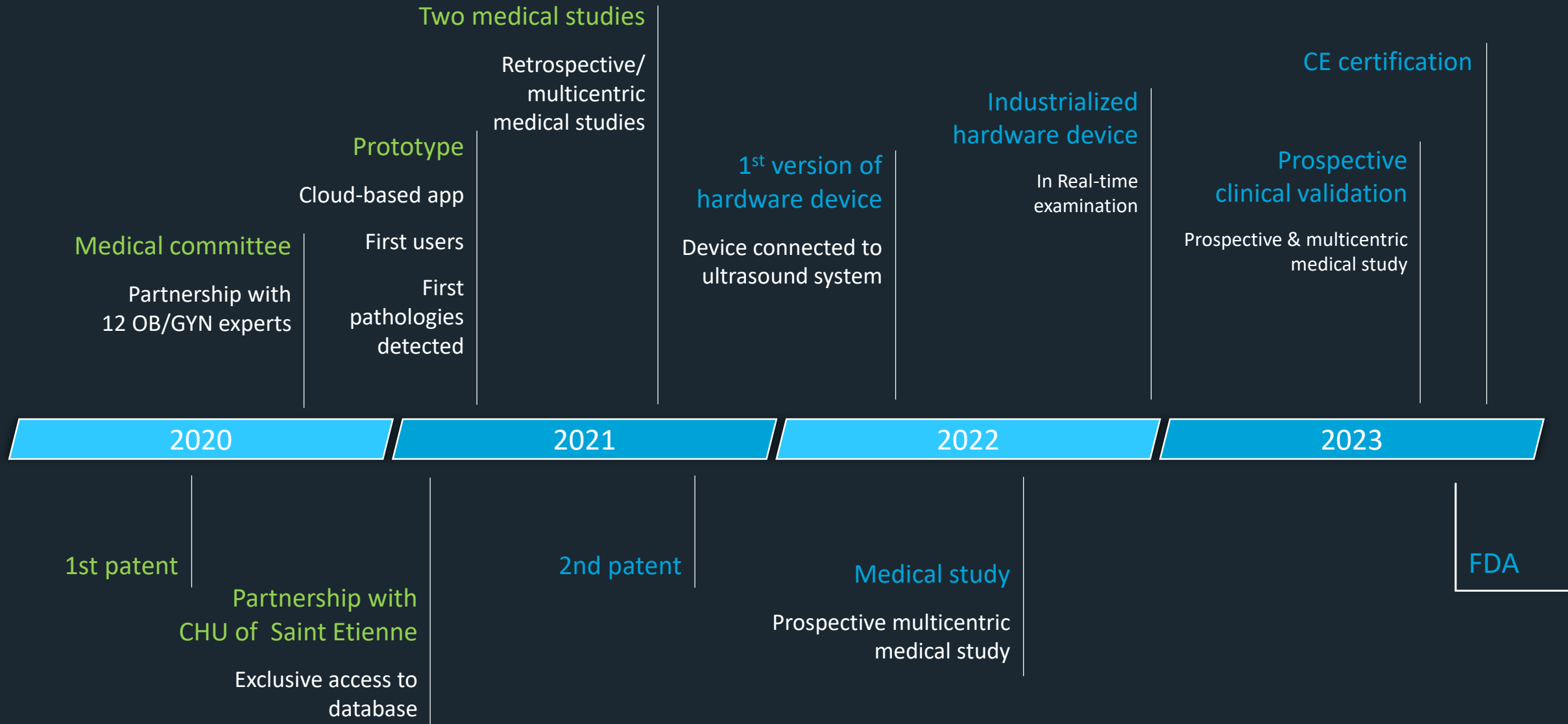
Medical committee: 12 OB/GYN experts including midwives, OB/GYN doctors and cardiologists

Artificial intelligence: Pr. Dr. Philippe DELACHARTRE, laboratory Creatis, INSA Lyon



ROADMAP

340k€ of non-dilutive funding are obtained



THEY BELIEVE IN US

